

7.1.2 - 2. Any other relevant evidence for the selected options needed attested by the Principal.

7.1.2: Alternate source of energy and energy conservation measures of the institution

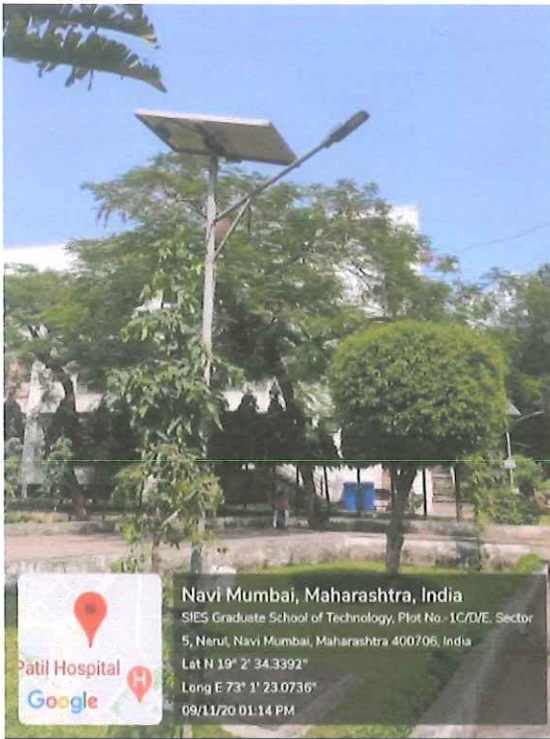
Measures



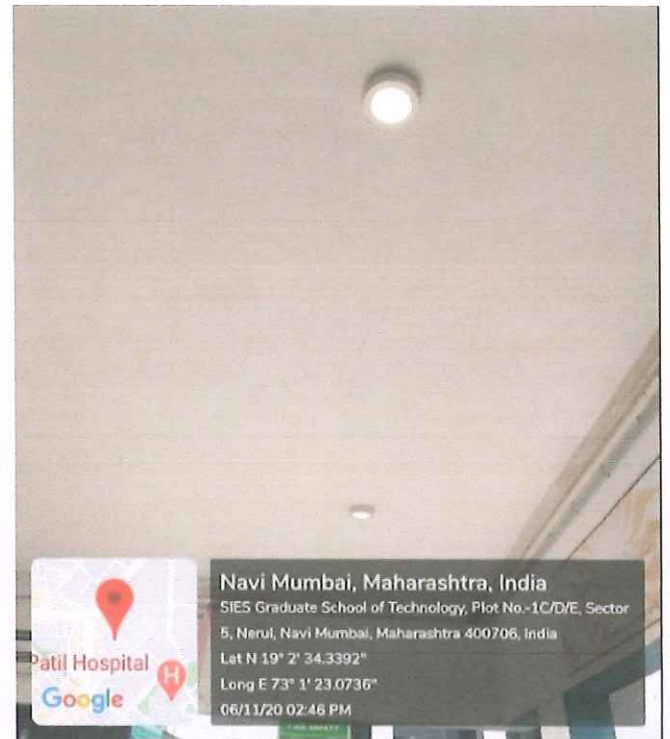
Solar panels



Principal
S.I.E.S. GRADUATE SCHOOL OF TECHNOLOGY
PLOT 10/D/5, SIR CHANDRASEKARENDRA SARASWATHY VIDYAPURAM
SECTOR 5, NERUL, NAVI MUMBAI - 400 706.



Street Solar light



LED tubelights




Principal
S.I.E.S. GRADUATE SCHOOL OF TECHNOLOGY
PLOT 1C/D/E, SRI CHANDRASEKARENDRASARASWATHY VIDYAPURAM
SECTOR-5, NERUL, NAVI MUMBAI - 400 706.